

D-mine[®] Pump



Welcome to D-mine[®] Pump User Guide



**A guide for patients, families and carers using
the D-mine[®] Pump to administer Dacepton[®].
(Apomorphine Hydrochloride Hemihydrate)**

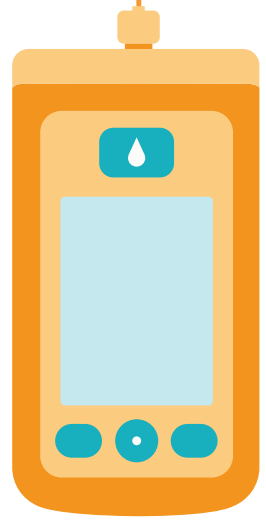
Adverse event reporting information can be found on the back page.



For people who are using the D-*mine*[®] Pump and have been prescribed Dacepton[®]

Welcome to *D-mine*[®] Pump User Guide

This booklet will take you through the key information relating to your ***D-mine*[®] Pump**. Do not hesitate to contact your healthcare professional or ***D-mine*[®] Care** nurse advisor with any questions.



Apomorphine is NOT morphine and does not have any pain killing properties, nor is it addictive. Please note that Dacepton[®] will leave a green stain on any surface or material it comes into contact with.

Please see the **PATIENT INFORMATION** leaflet or consult your healthcare professional should you have any questions about **Dacepton[®]**.



Scan here
for the
**PATIENT
INFORMATION**
leaflet



Before you start

At this stage, you may feel overwhelmed by the idea of having to wear a Pump device throughout the day.

As Parkinson's disease develops, symptoms such as stiffness, slowness and pain when moving can become more difficult to control. This is known as being 'OFF'. Your doctor has determined that you may benefit from using

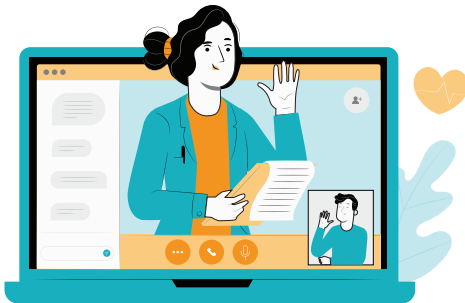
Dacepton®.

Dacepton® is a medicine that may help to reduce the amount of time in the 'OFF' state and reduce the associated symptoms. **Dacepton®** can be administered via the **D-mine® Pump** to provide you with a continuous infusion of the medicine.

Our dedicated and highly experienced **D-mine® Care** nurse advisors are here to support you, your family and carers and are available to answer any questions or concerns you may have about **Dacepton®** therapy and the **D-mine® Pump**.

The **D-mine® Pump** has been designed to have little impact on your daily life and facilitate you in doing your normal activities.

This booklet will take you through how to use your **D-mine® Pump**.



When you receive your **D-mine® Pump**, you will find the **INSTRUCTIONS FOR USE** leaflet behind the foam casing. You can also contact your **D-mine® Care** nurse advisor for any additional support.

To use Dacepton® with your D-mine® Pump you will need the following:

D-mine® Pump

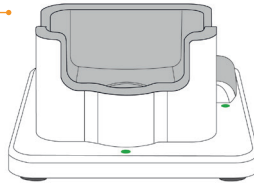


Carrying Case

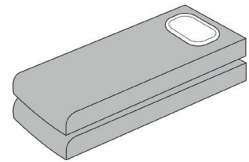


Docking Station

attached to an electrical plug - to charge the batteries for your Pump.



2 x Rechargeable Batteries



You prescription should state:

Dacepton® Vials

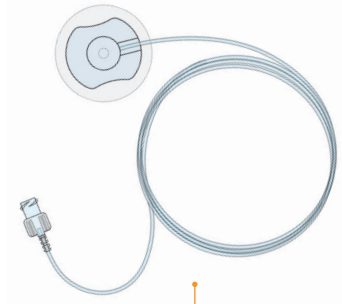
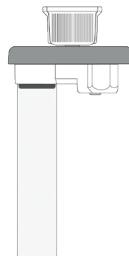
which contains your medication.



D-mine®

Reservoirs

- the reservoir holds your **Dacepton®** when it is in your Pump.



Infusion Set (D-mine® Infset)

- to connect your Pump to your body

Before you infuse

STORAGE AND HANDLING ADVICE

DO's

- Always check the expiry date of your medicine – this is stated on the label on your medication next to the letters EXP. The expiry month refers to the last day of the month.
- Do not refrigerate or freeze.
- Always handle the device and medication with clean hands and a clean environment.
- Clean your skin as per the advice given by your healthcare professional.
- Use a new infusion line every day.
- Place infusion lines into sites on your body such as your abdomen or your outer thighs as shown by your healthcare professional.
- Change your injection site each time.

DON'T's

- Do not use if the solution has turned green, is cloudy or you can see particles in it.
- Do not place the infusion line into a skin fold or scar tissue.
- Do not place infusion line into an area of skin that is sore, red, infected or damaged.



See the skincare section in this booklet for more information.



Preparing a new Reservoir

1



Remove the **D-mine® Pump** Reservoir from its packaging.

2



Insert Reservoir into Pump by clicking it firmly into place and ensure that the white adaptor is tightened.

3



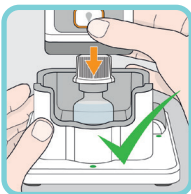
Use the arrow buttons to scroll down and press ✓ to confirm "New Reservoir" then Confirm "Display & Sound OK".

4

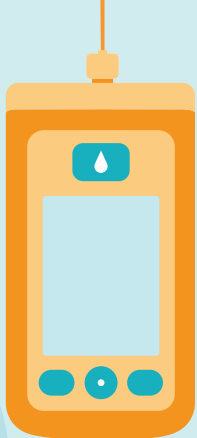


Remove orange cap and place vial into the docking station.

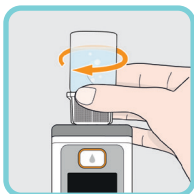
5



Turn the Pump upside down and push the white adaptor onto the vial firmly. Turn the Pump upright, press to ✓ to confirm on the Pump when the vial is attached.

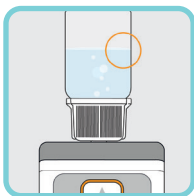


6



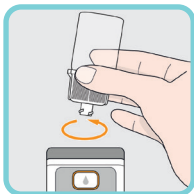
Twist the white adapter clockwise to secure the vial. Follow instructions on the screen to start the filling process.

7



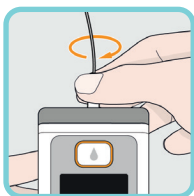
The filling process may take several minutes, place your Pump upright into the docking station while you wait. Air bubbles will form in the liquid during the filling process.

8



After the filling process is complete, unscrew the vial from the Pump by twisting anti-clockwise and discard. Press ✓.

9



Attach the infusion line to the Pump firmly screwing it into place. Confirm each instruction displayed on the Pump screen by pressing ✓.

Starting the Infusion

Follow this process if you are re-connecting to a previously filled Reservoir

1

“Stand Pump in docking station” and confirm by pressing ✓.

2

See display screen message “Pump is being prepared”, allow a moment for this.

3



You will then have the option to prime the infusion line – select Yes or No.



3a If Yes is selected – you can stop priming by pressing “stop” when the line is primed.

3b If No is selected – you may insert the needle dry. The line will fill when the infusion is commenced.

3c Ask your healthcare professional for advice on priming the infusion line.

4



Insert the infusion line as per the advice of your healthcare professional and confirm on the Pump.

5



To start the infusion, press and hold the middle button (START button) for five seconds. Release the button once the device beeps.

6



Place the Pump into the carrying case. This will help protect your Pump from accidental damage.

Stopping the Infusion

1



Turn the Pump off by pressing and holding the middle button for five seconds. Release the button once the device beeps.

2



Remove the dressing surrounding the needle and gently remove the needle from the skin.



Disconnect the infusion line from the Pump.

3



3a If the Reservoir on your Pump contains medication that can be used the following day, place a Combi Stopper on the Pump.*



3b If your Reservoir is empty, remove the used Reservoir from the Pump by firmly pressing the grey button on the side of the Pump and discard of the reservoir.

4



Place the Pump into the docking station. This will help protect your Pump from accidental damage.

*Combi stoppers are not provided as an essential item. However, can be prescribed by your healthcare professional on request.

Restarting the Infusion

Follow these steps if your Pump was stored overnight with a Reservoir containing medication from the previous day.¹

1



To restart infusion press any button and then select the button below the unlock symbol on the bottom left.

2



Press the menu button located at the bottom right of the screen.

3



Use the down button to highlight 'Change infusion set' and then press the ✓.

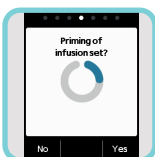
4



Connect the infusion line to the Pump. Once the infusion line is connected press the ✓.

¹ SmPC Section 6.3 "After first opening the chemical and physical in-use stability has been demonstrated for 7 days at 25°C. From a microbiological point of view, unless the method of opening and further handling precludes the risk of microbial contamination, the product should be used immediately. If not used immediately, in-use storage times and conditions are the responsibility of the user." Hence the user should ensure that the handling of **Dacepton**[®] and **D-mine**[®] devices are in accordance with the instructions for use, SmPC and the guidance provided by the **D-mine**[®] nurse advisor or treating healthcare professional. Once opened, the user is responsible for in-use storage times and conditions to prevent microbial contamination.

5

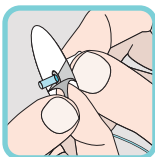


'Priming of infusion set?' will appear on the screen. If your healthcare professional recommends that you prime the infusion set before use, press Yes and proceed to 5a. If not, Press No and proceed to step 6.



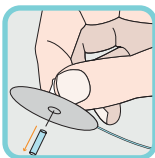
5a Once the infusion set has been primed the screen will display 'Continue Priming?'. Press No.

6



Remove the backing from the adhesive pad.

7



Take the plastic cover off the needle by twisting the cap off and insert the needle into the skin. Injection sites can be found on the next page.

8



Press and hold the middle button for five seconds. Release the button once the device beeps.

9



Place the Pump into the carrying case. This will help protect your Pump from accidental damage.

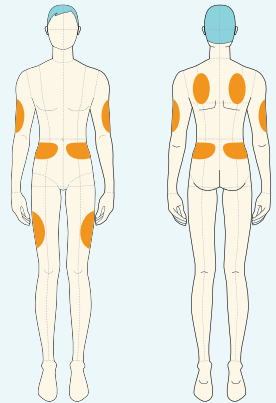
Caring for your skin

Although Apomorphine is absorbed quickly from the injection site, it can pool under the skin causing skin reactions. This can cause your skin to become red, tender or itchy. You may also feel hardening of the skin around the injection site (nodules).

These skin reactions are not dangerous and can be managed through good skincare practices and why you must use a different injection site each time you use Apomorphine.

Tips

- Insert your new infusion line at least 2 inches (5 cm) away from any recent infusion sites and 2 inches (5 cm) away from your belly button.
- Insert the needle at a 90 degree angle.
- Keep your skin dry and be sure to wipe away any residual drops of **Dacepton®**.
- Massage your skin by hand or with a massage device, as this may help prevent the formation of skin nodules.
- Do not inject into a skin fold or scar tissue and do not inject into an area of skin that is red, sore, infected or damaged.



If persistent skin reactions occur, please consult your healthcare professional or your D-mine® Care nurse advisor.

If you stop using Dacepton®

The decision to stop using **Dacepton®** should be discussed with your doctor. Your symptoms may return upon stopping treatment. If you have any further questions on the use of this medicine, ask your healthcare professional or your **D-mine® Care** nurse advisor.

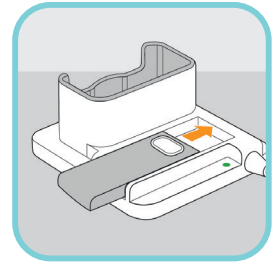
FAQs

What happens if I have a problem with my **D-mine® Pump**?

For any troubleshooting or technical support relating to your device please call **0800 254 0175** (Monday–Sunday: 07h00–22h00). Outside of these hours, leave a message and you will receive a call back the next day. Or you can email ever.pharma@nhs.net. Your **D-mine® Pump** will be replaced free of charge in the case of accidental damage or fault.

How do I charge my Pump?

The batteries within the Pump are removeable and will need to be recharged. To remove, press the white button and slide the battery downwards. Slide the battery into the docking station – shown on the picture. Once charged, place back within your **D-mine® Pump**.



If this is the first time you are using the **D-mine® Pump**, ensure that both batteries are fully charged.

How do I get hold of my medication?

There are different options available to receive your **Dacepton®**.

- You can get your **Dacepton®** medication, reservoirs and infusion lines from your local pharmacy. You will need a prescription from your treating healthcare professional to hand into your chosen pharmacy.
- Homecare (medication delivered to your home) must be agreed by your NHS Trust and is provided by our partner Alcura – the medication and ancillaries on your prescription will be delivered to your home.

Can I travel with my Pump?



Yes, you can travel with the **D-mine® Pump**, you will just need to plan ahead and ensure that you have enough **Dacepton®** medication for the period you will be away.

In addition to your **Dacepton®** you will also need to ensure you have:

- Infusion lines – to change your line once per day.
- **D-mine®** Reservoirs – to ensure continued delivery of your **Dacepton®**.
- Docking station – to charge your batteries.
- Plug adaptor – for your docking station.
- Batteries – don't forget to take both batteries so your therapy is not interrupted.



If travelling to a destination with a different time zone, contact your D-mine® Care nurse advisor or the technical support line on 0800 254 0175 (available times are on the back of this booklet) to update your settings in line with different time zones.

Ask your **D-mine® Care** nurse advisor for a copy of the Travel Letter. This can be used if requested by any relevant border officials to explain why you need your **Dacepton®** therapy when travelling abroad.

We recommend carrying your medication in any hand luggage to avoid extremes changes in temperature.

Your **D-mine® Pump** does not emit radio signals and meets the regulations for unintentional electromagnetic interference. Safety systems for security checks at airport should not impair the functionality.

What if I miss a period of time on my Pump?

This should not be an issue however, you may see some of your symptoms start to return. Set your **D-mine® Pump** up as normal. The **D-mine® Pump** has a bolus function if you feel you need additional medication.

How long does Dacepton® last after opening?

Always check the expiry date of your medicine and do not use if the solution has turned green.

After first opening **Dacepton®** is stable within the device for 7 days at 25°C for more information please see the **Dacepton®** SmPC and guidance provided by the **D-mine® Care** nurse advisor or treating healthcare professional.

From a microbiological point of view, unless the method of opening and further handling precludes the risk of microbial contamination, the product should be used immediately. If not used immediately, in-use storage times and conditions are the responsibility of the user. Hence the user should ensure that the handling of **Dacepton®** and **D-mine®** devices are in accordance with the instructions for use. Once opened, the user is responsible for in-use storage times and conditions to prevent microbial contamination.

What if I go into hospital?

If you need to go to hospital, try and take as much information as you can about your medication, this booklet might be helpful. You may need to explain your treatments to other healthcare professionals.



Diary

Name:

Start Date:

Next Prescription Refill:

Your **D-mine**[®] nurse advisor:

Sometimes it can take up to 3 months to feel an improvement in your symptoms. A diary is a great way to keep track of your progress. This is also useful for your **D-mine**[®] **Care** nurse advisor to help you with any issues you might have.

Keep a record below of how you are feeling:

Date	How do I feel?

D-mine[®] Care

Who to contact for support

For support related to your **Dacepton[®]** therapy, please contact your healthcare professional or your **D-mine[®] Care** nurse advisor.

Please note, your **D-mine[®] Care** nurse advisor works Monday–Friday, 09h00–17h30. Please **leave a message** when prompted and you will receive a response within 24 hours.

Technical Support

For technical support relating to your device:

- 📞 0800 254 0175 (Monday–Sunday: 07h00–22h00). Outside of these hours, **leave a message** and you will receive a call back the next day.
- ✉ email ever.pharma@nhs.net

Prescriptions and ancillaries

For support relating to prescriptions and ordering:

- 📞 0800 254 0176 (Monday–Friday: 08h00–16h00)
- ✉ email info.uk@everpharma.com

Adverse Events

Any adverse events should be reported to your healthcare professional. You can also report adverse events directly via the Yellow Card Scheme at www.yellowcard.mhra.gov.uk

Adverse events should also be reported to Medical Information on: 0800 254 0174 or drugsafety@everpharma.com

By reporting adverse events you can help provide more information on the safety of this medicine. Very common side effects include hallucinations and injection site reactions. If you experience these side effects, please discuss them with your healthcare professional.

This booklet has been produced by EVER Pharma in the interests of patient education.

The D-mine[®] Care nurse service is contracted through Bionical Health.

Registered Office: Bionical Health Ltd, The Piazza, Mercia Marina, Ffindern Lane, Willington, Derbyshire, DE65 6DW. No. 15300657

The D-mine[®] Care nurse service can only be engaged after a decision to prescribe Dacepton[®] has been made.

Dacepton[®] and **D-mine[®]** are registered trademarks of EVER Pharma.

MED-DOC-EVPH-017-v01 Date of Preparation: August 2024

